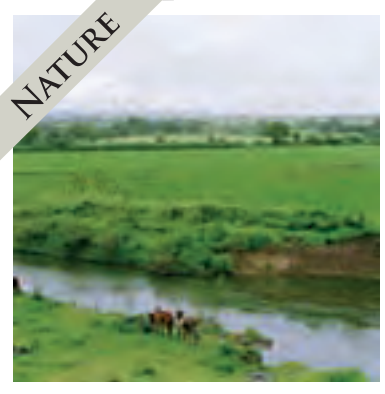




LIFESTYLE CONDO PROJECT  
AMIDST NATURAL SURROUNDINGS  
SUITED FOR NRIs AND NRGs



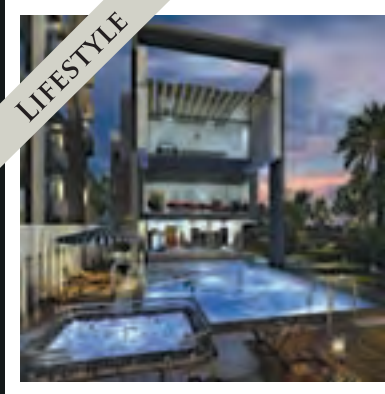
NATURE



LUXURY



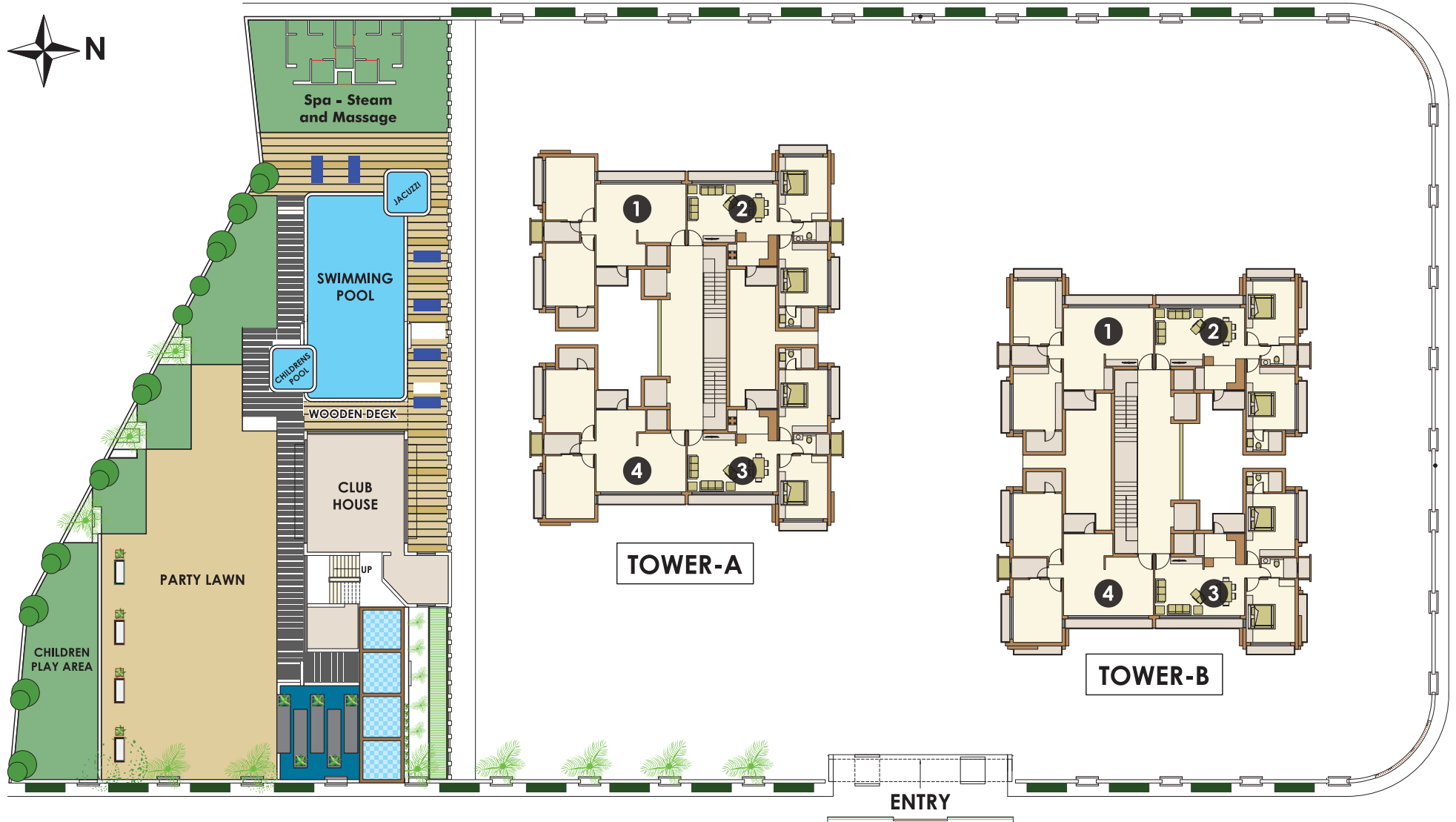
LIFESTYLE



 PROJECT



# LAYOUT



- Lifestyle condominium project situated close to Rajkot city
- 80 - Two BHK\*, 1490 sq.ft, smart living condominiums
- 2 Towers, having 10 floors with 4 condominiums per floor
- About 20 minutes drive from airport, railway station and other key places
- Excellent hassle free investment with 100% payment through bank

- 17 acres of open farm land surrounding the project with excellent view of nearby Nyari river and Nyari-2 dam
- Direct access from fast developing four track Rajkot - Jamnagar highway
- Close to popular restaurants, international class cricket stadium, leading international school and proposed airport

\* Three and four bedrooms options are also available by combining two units.



- Fully furnished & air-conditioned condos
- Spacious floor plan with luxury amenities including dust/sound resistant windows, interior paint and wooden flooring in bedroom
- Spacious visitors lounge
- Excellent landscaping and ample parking space
- Power backup in all condos
- Swimming pool with jacuzzi, steam and spa facilities
- Multi-purpose AC hall for small functions
- Party lawn for outdoor functions
- Cafeteria
- Well-equipped gym and indoor games including pool table, table tennis
- Miniature golf
- Children splash pool



### PRIMARY SERVICES

- Free house keeping service for each condo
- Gated development with 24 x 7 security
- Free pick up and drop from the Rajkot airport
- Home delivery of groceries and essentials
- Help desk facility for all assistance (travel, medical, financial, leisure, etc)
- Guest rooms upon request
- Massage therapist upon request
- Single point contact (email/phone) in India for assistance

### PARTNER SERVICES

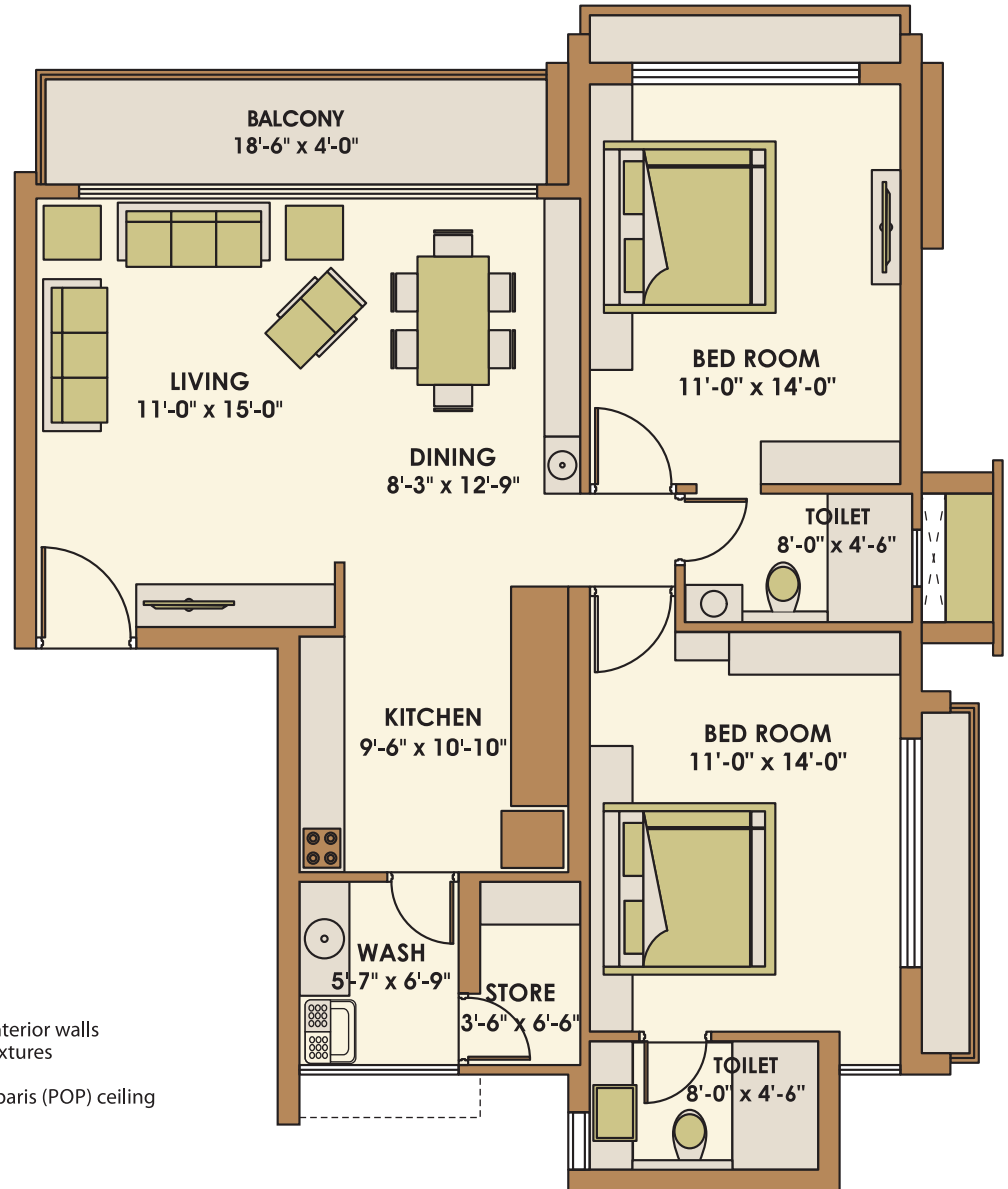
- Assistance in travel planning
- Assistance in financial and legal matters
- Assistance in organizing parties or events
- Assistance in real estate search, buying & maintenance
- Assistance in identifying good medical service providers
- Ayurvedic treatment upon request

Note: Conditions may apply

# CONDO PLAN



**Typical condo plan**  
(Super Builtup: 1490 SQ. FT.)



## FURNITURE LIST

### (A) Bed Room - 1

- Double bed with side table
- Wardrobe
- Dressing table
- Air-conditioner (AC)
- Mattress / Blankets / Cushions

### (B) Bed Room - 2

- Double bed with side table
- Wardrobe
- Dressing table
- Air-conditioner (AC)
- Mattress / Blankets / Cushions

### (C) Living Room

- Sofa (6-seater)
- Center table
- TV Set (32")
- Air-conditioner (AC)

### (D) Kitchen / Dining

- Kitchen furniture
- Dining Table
- Fridge (250 liter)
- Microwave oven
- Washing machine
- Water purifier (RO unit)

### (E) General

- Paint on Interior walls
- Lighting fixtures
- Curtains
- Plaster of paris (POP) ceiling
- Artifacts

# LOCATION





**ACE Riverside Pvt. Ltd.**

801, Everest Commercial Complex, Opp. Shastri Maidan, Rajkot - 360001, (Gujarat) INDIA  
**Fax:** +91-281-2232918 • **Email:** info@ace-riverside.com • **Web:** www.ace-riverside.com

**INDIA**

**Sanjay Dhamsania** - Rajkot  
**Cell:** +91 990 433 5333  
**Email:** sanjay@ace-riverside.com

**USA**

**Arvind Sitapara** - MD  
**Cell:** +1(301) 906 -1457  
**Email:** arvind.sitapara@ace-riverside.com

**UK**

**Kirit Patel** - London  
**Cell:** +44 797 625 8596  
**Email:** kirit.patel@ace-riverside.com

**Milan Shah** - London

**Phone:** +44 797 096 9793

**Email:** milan.shah@ace-riverside.com